

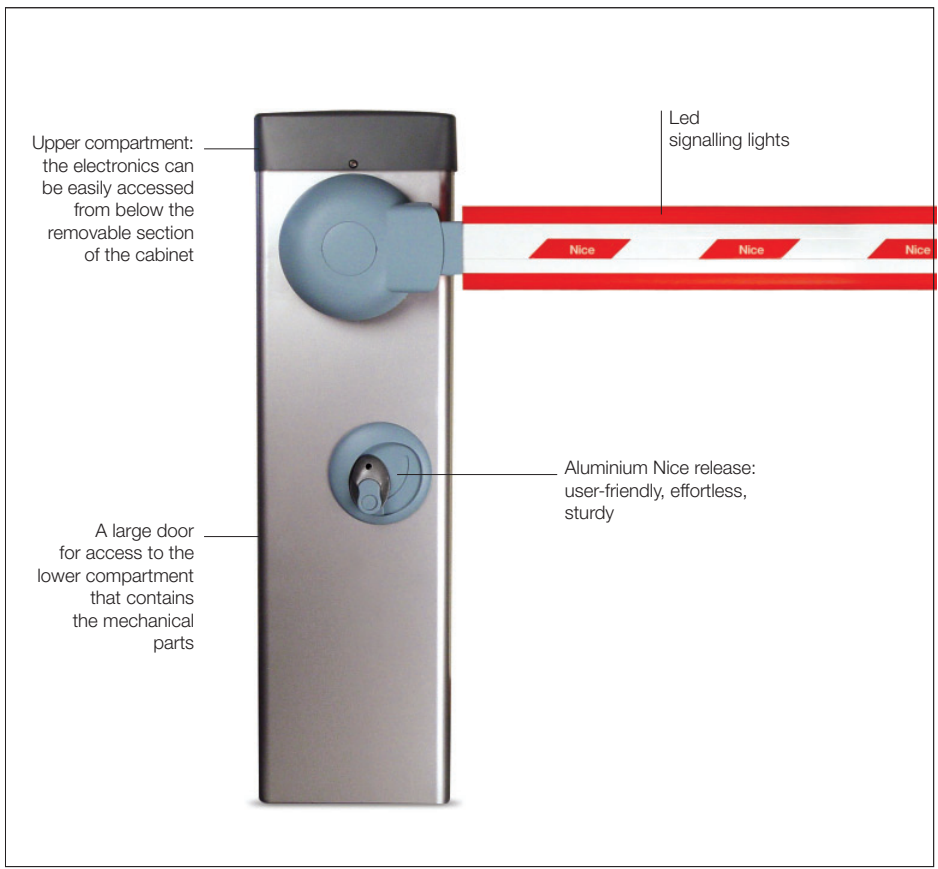


Nice systems to control roadways  
to residences, companies  
and communities.



**Nice**





**For private, public and industrial car parks.** Electromechanical barrier gate operator with encoder.

**Powerful and quick:** electromechanical 24 Vdc gear motor, 500 W power and up to 250 Nm torque. It opens up completely (90°) in just 1.8 seconds (Signo3), 3 seconds (Signo4), 6 seconds (Signo6). Models with a 230 Vac or 110 Vac power supply.

**Even more sophisticated and well-developed new control unit:** The same for all models, it automatically recognises and memorises the Signo model on which it is installed thereby eliminating the first installation procedure. Signals that the power supply is correct when started and that the control unit is functioning correctly. Automatic diagnostics during operation, with differentiated visual signals according to the type of fault.

**Intelligent:** the manoeuvre will invert automatically if the bar comes into contact with an obstacle. The control unit automatically corrects any eventual lack of balance linked to variations in the climate or poor installation.

**Safe:** the innovative control unit utilises a revolutionary management system of the force, speed, acceleration and deceleration that can be **programmed at 6 levels**, at the beginning and at the end of the manoeuvre. Programming is intuitive and completely automatic with the Nice Encoder technology: Simply push a button and Signo will comprehend the limit switch limits.

**Large openings:** a master/slave selection automatically synchronises two opposing barriers enabling the automation of transit points up to 8 and 12 m.

**Convenient:** separate compartments for electronics and mechanics provide the user with easy access without damages to internal parts.

- Exclusive functions:**
- the barrier will close immediately after the vehicle has passed through;
  - it has two types of traffic-light type signals;
  - there is an automatic safety test at the beginning of each manoeuvre;
  - constant resistance STOP input for connecting the latest generation of sensitive edges;
  - there is a manoeuvre counter and it is possible to programme the maintenance alarm threshold.

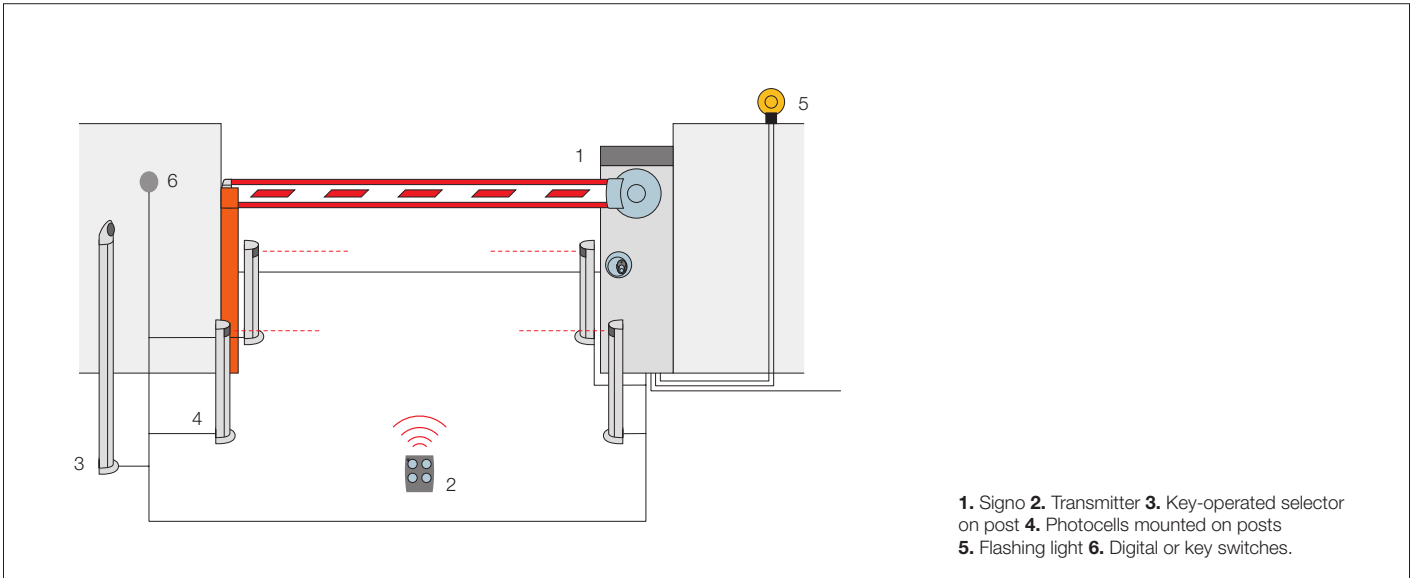
**Intensive use**  
The new, 24 Vdc gear motor Signo can be used intensively for long periods of time. This characteristic makes it ideal for automating private, public or industrial car-parks which are subjected to the frequent passage of vehicles during the day.

Code	Description
<b>SIGNO3</b>	For bars up to 3 m, irreversible 230 Vac, 24 Vdc motor, with galvanised steel painted case
<b>SIGNO3I</b>	For bars up to 3 m, irreversible 230 Vac, 24 Vdc motor, with satin stainless steel case
<b>SIGNO4</b>	For bars up to 4 m, irreversible 230 Vac, 24 Vdc motor, with galvanised steel painted case
<b>SIGNO4I</b>	For bars up to 4 m, irreversible 230 Vac, 24 Vdc motor, with satin stainless steel case
<b>SIGNO6</b>	For bars up to 6 m, irreversible 230 Vac, 24 Vdc motor, with galvanised steel painted case
<b>SIGNO6I</b>	For bars up to 6 m, irreversible 230 Vac, 24 Vdc motor, with satin stainless steel case

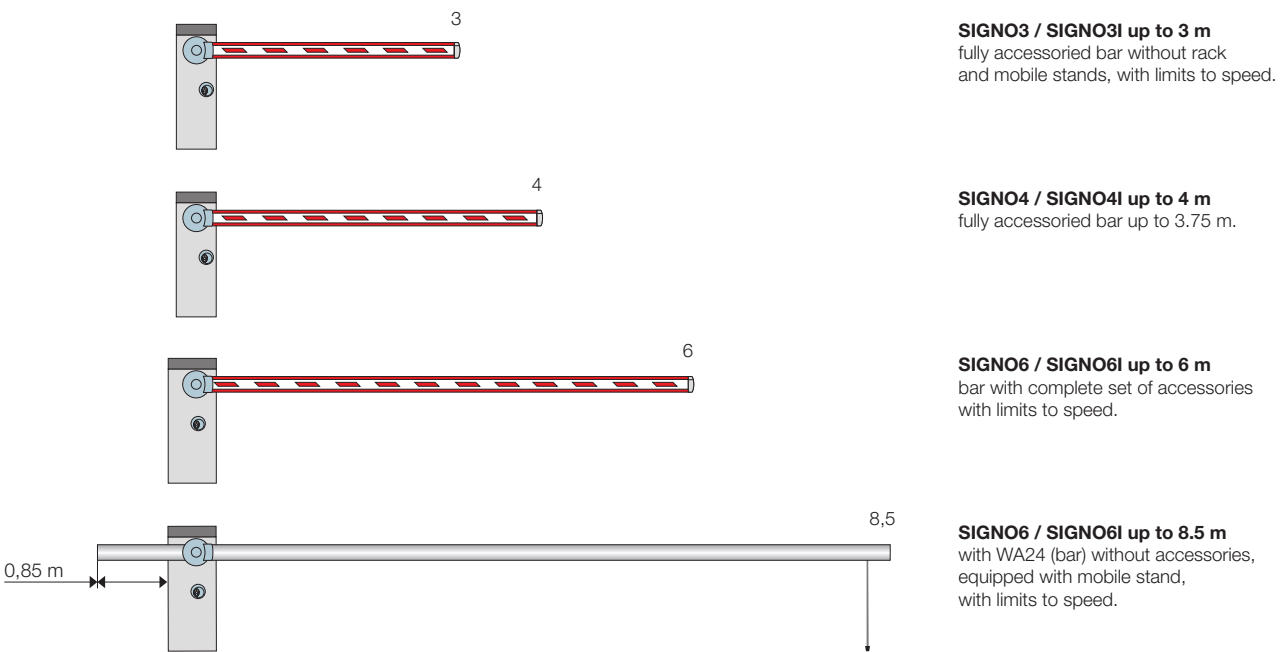
**Technical specifications**

Code	SIGNO3 - SIGNO3I	SIGNO4 - SIGNO4I	SIGNO6 - SIGNO6I
<b>Electrical data</b>			
Power supply (Vac 50/60 Hz)	230		
Absorption (A)	1.1	1.3	1.3
Power (W)	300	300	500
<b>Performance data</b>			
Min.÷max. opening time (s)	1.8÷4	3÷6	6÷10
Torque (Nm)	130	200	250
Work cycle (cycles/hour)	600	400	250
<b>Dimensional and general data</b>			
Protection level (IP)	44		
Working temp. (°C Min/Max)	-20 ÷ +50		
Dimensions (mm)	320x200x1070 h		420x220x1070 h
Weight (kg)	50		58

## Example of general setup with safety

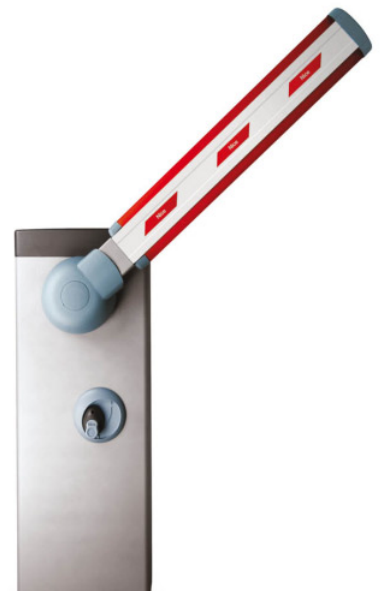
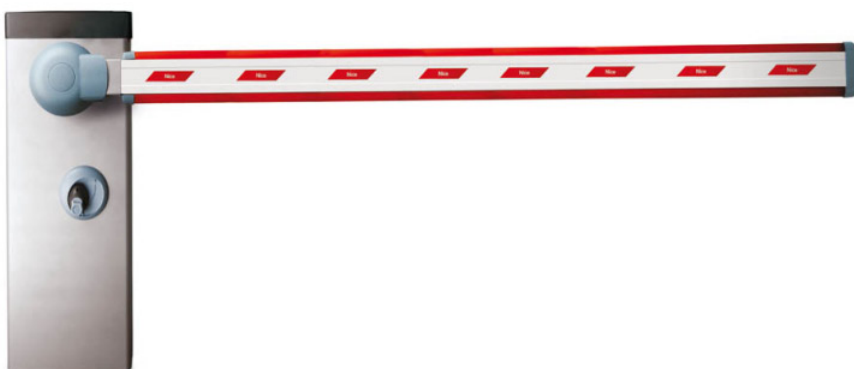


## Utilisation limits



## Bar lenght (m)

Tubular aluminium bars don't need the use of accessories (only WA11).



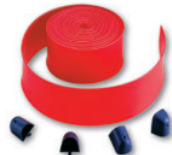
## Accessories for SIGNO3 / SIGNO3I



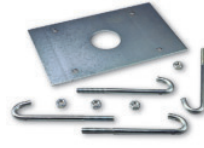
**SIA3**  
Aluminium bar, painted white 36x73x3250 mm.



**WA25**  
Pivoting connection for rectangular bars up to 4 m.



**WA2**  
8 m pack of red shockproof rubber strip with caps to close SIA3 bar.



**SIA1**  
Anchorage base with clamps.

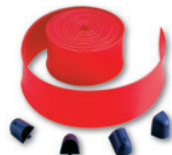
## Accessories for SIGNO4 / SIGNO4I



**WA1**  
Aluminium bar, painted white 36x73x4250 mm.



**WA25**  
Pivoting connection for rectangular bars up to 4 m.



**WA2**  
8 m pack of red shockproof rubber strip with caps to close WA1 bar.



**WA13**  
Aluminium rack (2 m) for WA1, WA21, WA22 bars.



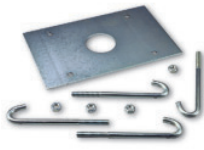
**WA14**  
Joint for rods WA1 (from 1950 mm to 2400 mm).



**WA3**  
Tubular aluminium bar, painted white Ø 70x4250 mm, suitable where there are strong winds. Only with WA11.



**WA4**  
Connection for the WA3 bar.



**SIA1**  
Anchorage base with clamps.

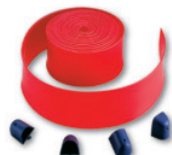
## Accessories for SIGNO6 / SIGNO6I



**WA21**  
Aluminium bar, painted white 36x94x6250 mm.  
Pc/pack 1



**WA22**  
Modular bar, plus joint painted white, 2 sections 36x94x3125 mm.  
Pc/pack 2



**WA6**  
Pack 12 m of red shockproof rubber strip with caps to close the bars WA21, WA22.  
Pc/pack 1

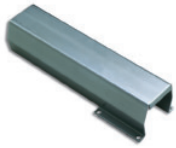


**WA24**  
Tubular telescopic bar in white painted aluminium, max. length 8.5 m, complete with mobile support WA12, counterweight and connector. 6 meters overall length for transportation. See draft page 93.  
Pc/pack 1

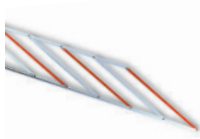


**WA7**  
Tubular aluminium bar, painted white Ø 90x6250 mm suitable where there are strong winds, only with WA11.  
Pc/pack 1

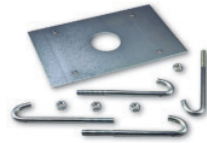
Accessories for SIGNO6 / SIGNO6I



**WA8**  
Connection  
for the WA7 bar.



**WA13**  
Aluminium rack (2 m)  
for WA1, WA21, WA22  
bars.



**SIA2**  
Anchorage base  
with clamps.

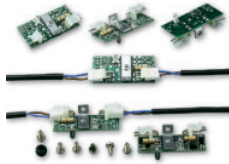
Common accessories



**SIA20**  
Spare control unit.



**PS224**  
24 Vdc buffer battery.



**WA9**  
Pack of 6 flashing signals,  
wired for WA1, WA21,  
WA22 bars.



**WA10**  
Red adhesive  
reflector strips.



**WA11**  
Adjustable stand  
for bars.



**WA12**  
Mobile stand  
for bars.



**OXI**  
Plug-in receiver



**ML24T**  
Flashing indicator light



**MOSE**  
Key selector switch  
for outdoor installation



**MOCF**  
Aluminium post for  
photo cells & key switch



**OX2**  
Pre-wired receiver card  
for control of Garage  
doors and external devices



**GO**  
Shockproof cover for  
NiceWay transmitters



**PO**  
Support bracket  
for photocells Bf, FE.



**MOTXR**  
Wireless keypad



**F210 & FA1**  
Photo safety beam  
vandal resistant cover



**ON2**  
Transmitter 433.92 MHz  
2 channel



**ABF**  
Tuned 433.92MHz  
aerial



**OLPA**  
Wireless wall button  
for multiple functions



**BF**  
Photocells



**MOF**  
Photocells



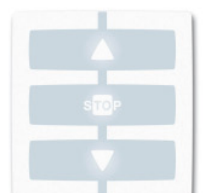
**STONE**  
Portable and table-top supports



**ML24**  
Flashing indicator light



**TT2L**  
Control unit for lighting  
systems with built-in  
radio receiver



**WM001G**  
NiceWay Transmitter module,  
Open-Stop-Close





## Certified quality.

Safety, quality, reliability and durability are priorities for Nice. All Nice Products in fact comply with the provisions of the **European Directives** governing construction.

## Service

Dealers who offer Nice products to their customers believe in the value of quality; providing service that satisfies all the needs and wishes of customers, before and after sales, is a duty. Contact a Nice specialist with complete trust!



Brisbane Automatic Gate Systems  
Unit 10, 7-9 Grant Street  
CLEVELAND, QLD 4163  
Ph: 07 3286 8111  
Fax: 07 3286 8113  
Email : [info@brisbaneautomaticgates.com.au](mailto:info@brisbaneautomaticgates.com.au)  
[www.brisbaneautomaticgates.com.au](http://www.brisbaneautomaticgates.com.au)